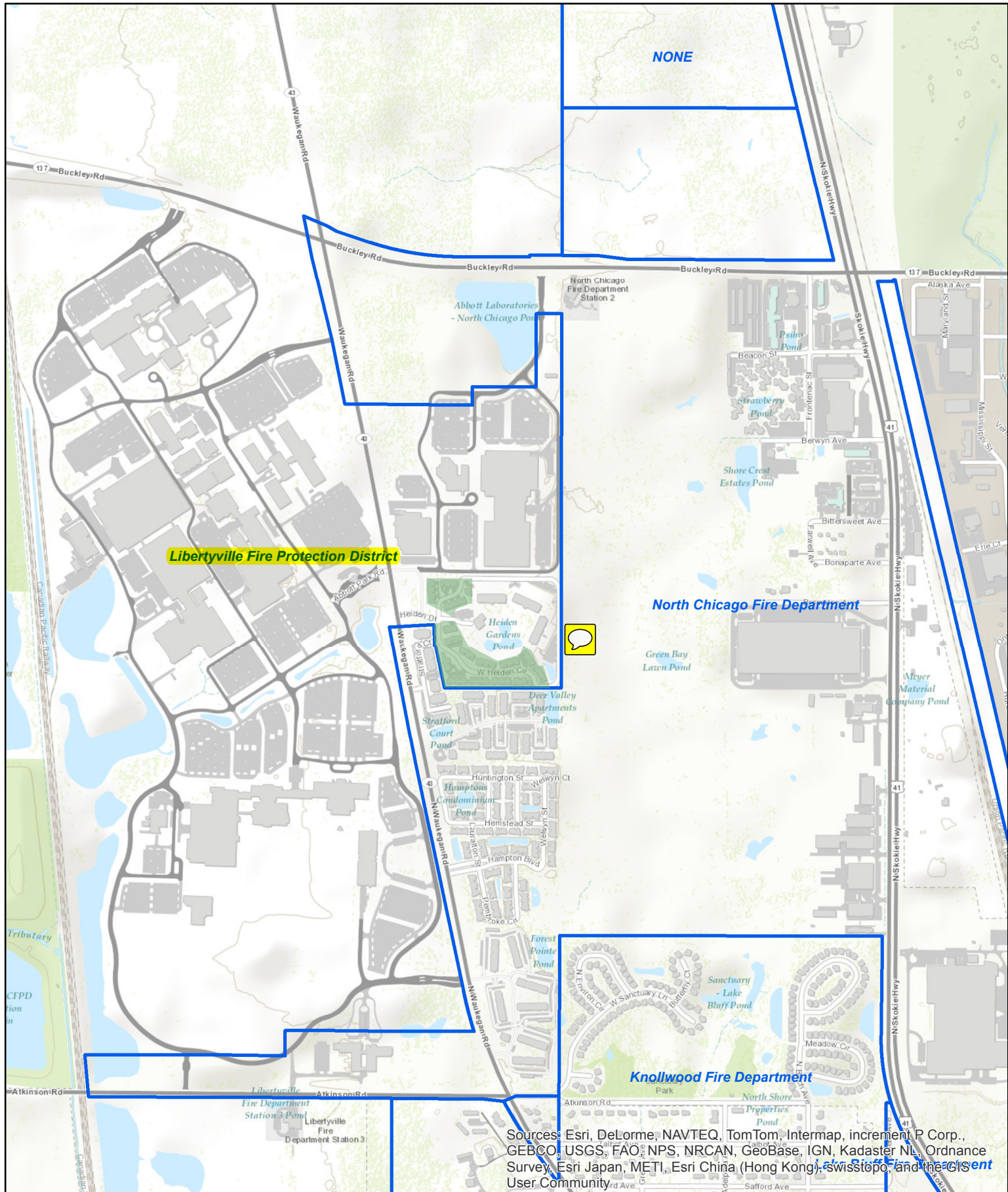


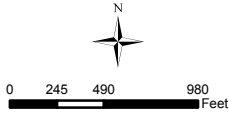
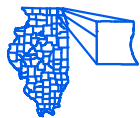
Whispering Lake - Fire Service Boundaries



Sources: Esri, DeLorme, NAVTEQ, TomTom, Intermap, increment P Corp., GEBCO, USGS, FAO, NPS, NRCAN, GeoBase, IGN, Kadaster NL, Ordnance Survey, Esri Japan, METI, Esri China (Hong Kong), Swisstopo, and the GIS User Community



Prepared By:
 Lake County Department of Information Technology
 GIS/Mapping Division
 18 North County Street
 Waukegan Illinois 60085-4357
 (847) 377-2373



- Whispering Lake Townhome Condo
- Fire Service